

Scale - 50,000 : 1  
0 km 1 km 2 km 3 km 4 km 5 km



### Schedule A

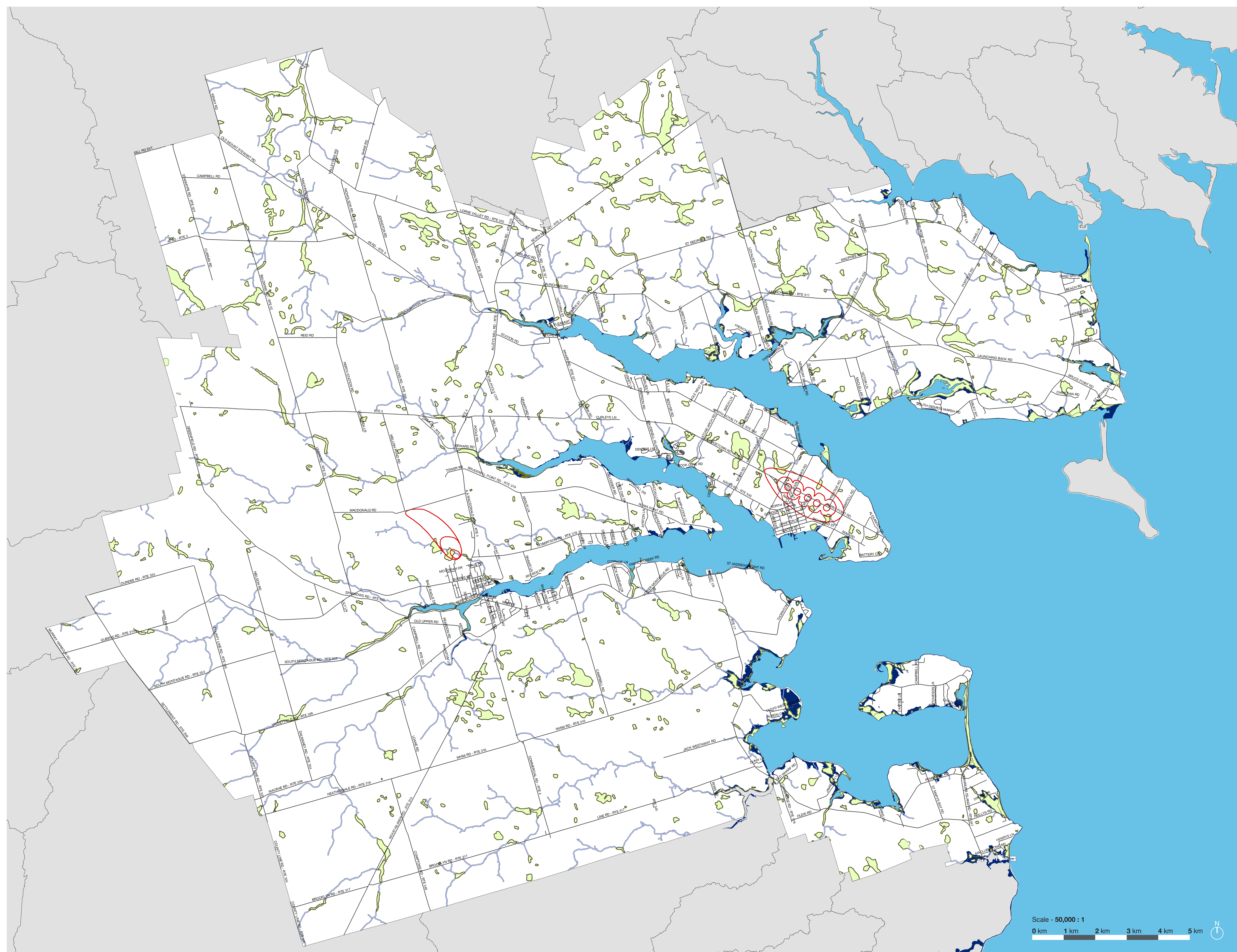
Land Use and Road Network

- Urban Settlement Area
- Rural Settlement Area
- Rural
- Agriculture
- Industrial
- Institutional
- Parks and Open Space

Three Rivers  
OFFICIAL  
PLAN







**Schedule B**  
Environmental Features  
and Hazards

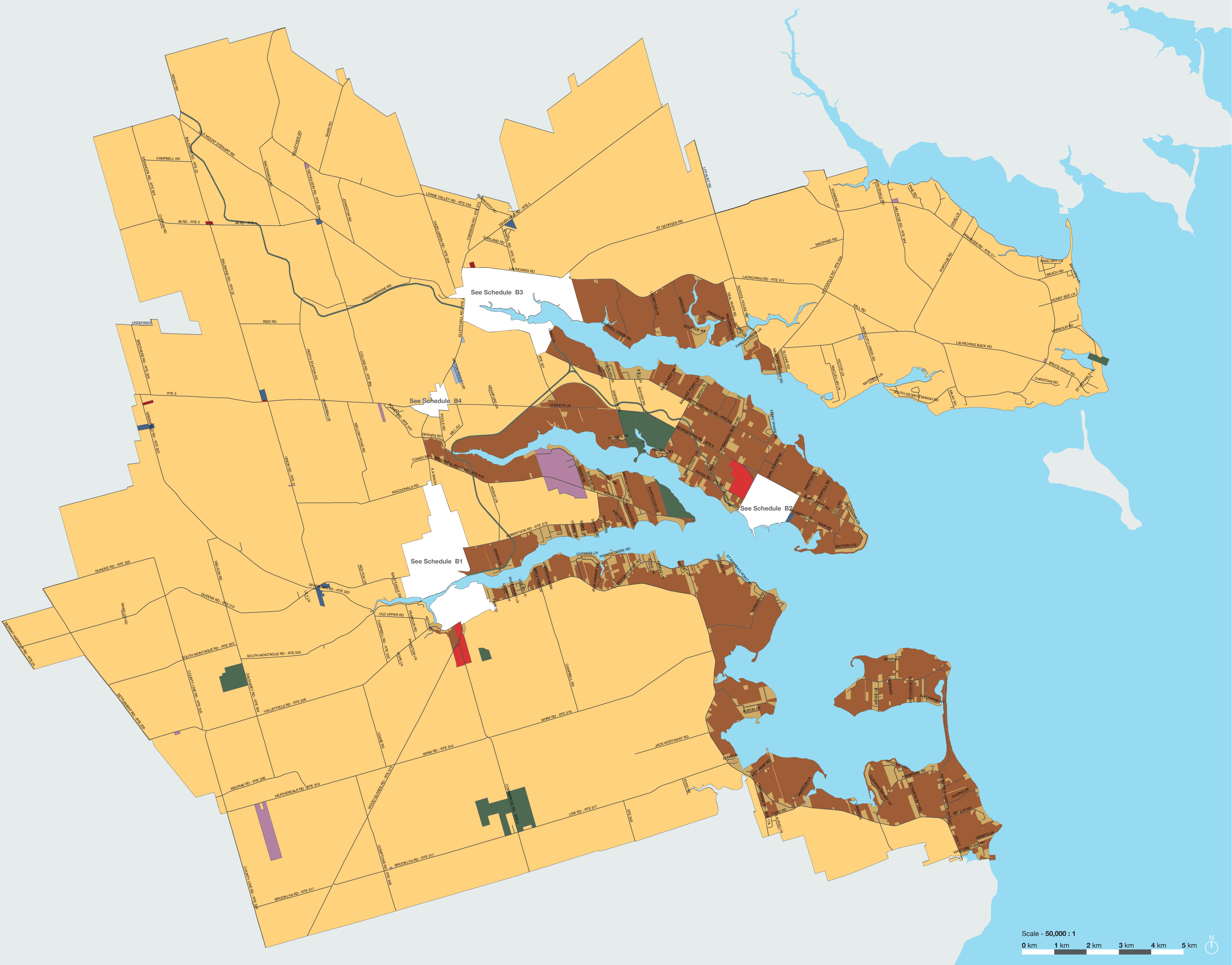
- Wellfield Protection Areas
- Wetland
- Wetland Buffer
- River
- River Buffer
- Rising Sea Level Impact Overlay

**Three Rivers**  
OFFICIAL  
PLAN



Scale - 50,000 : 1  
0 km 1 km 2 km 3 km 4 km 5 km





Scale - 50,000 : 1  
0 km 1 km 2 km 3 km 4 km 5 km



### Schedule A

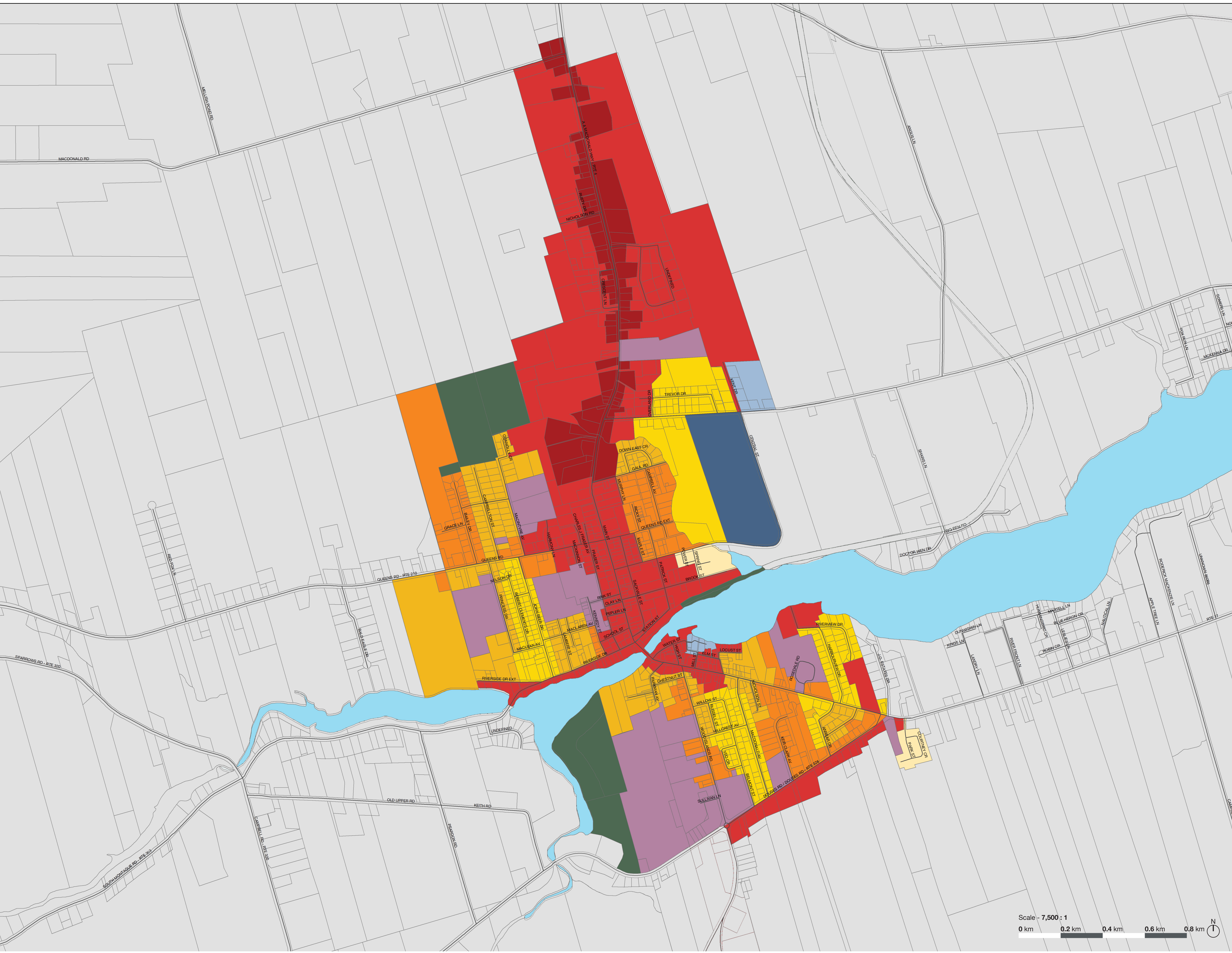
Land Use and Road Network  
Non-Settlement Areas

- See Settlement Schedules (B1-4)
- Rural Residential (RR)
- Rural (RU)
- Agriculture (AG)
- Highway Commercial (HC)
- Light Industrial (LI)
- Heavy Industrial (HI)
- Community (C)
- Parks and Open Space (OS)

Three Rivers  
OFFICIAL  
PLAN







Scale - 7,500 : 1  
0 km 0.2 km 0.4 km 0.6 km 0.8 km

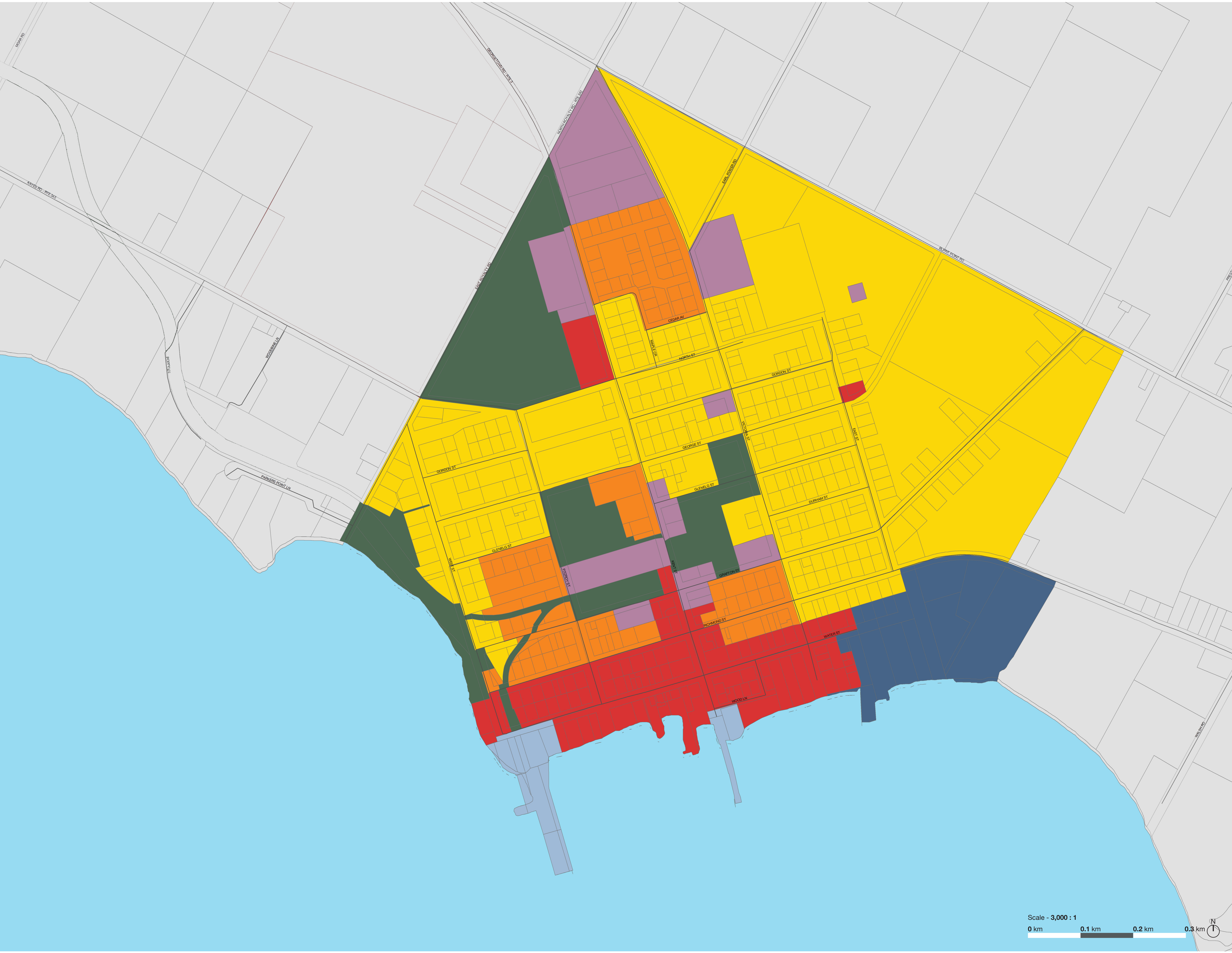


### Schedule B1 - Montague Land Use and Road Network

- Low Profile Residential (R1)
- Medium Profile Residential (R2)
- High Profile Residential (R3)
- Residential Mobile Home Park (RM)
- Mixed Use (MU)
- Highway Commercial (HC)
- Community (C)
- Light Industrial (LI)
- Heavy Industrial (HI)
- Parks and Open Space (OS)







**Schedule B2 - Georgetown**  
Land Use and Road Network

- Low Profile Residential (R1)
- High Profile Residential (R3)
- Mixed Use (MU)
- Community (C)
- Light Industrial (LI)
- Parks and Open Space (OS)





**Schedule B3 - Cardigan**  
Land Use and Road Network

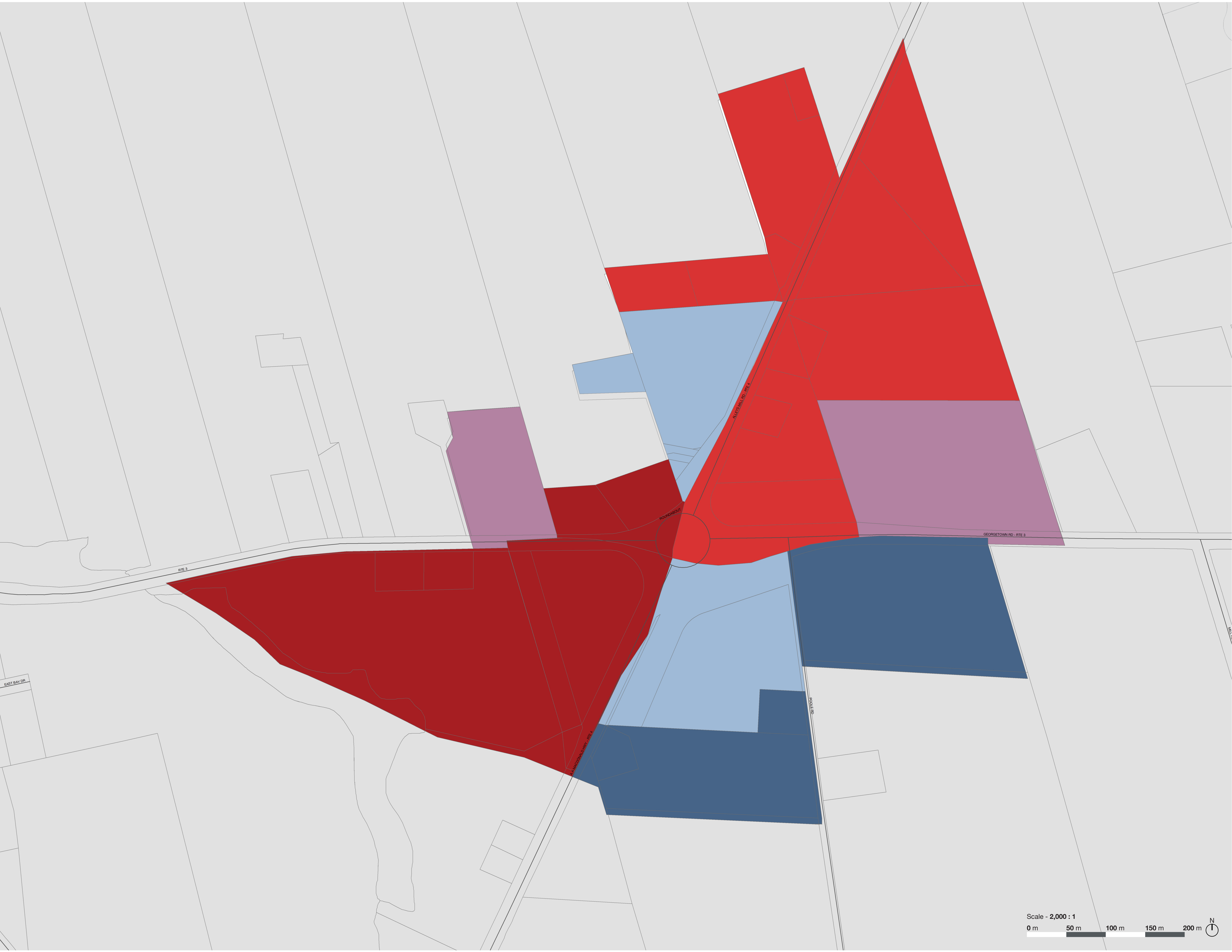
- Mixed Use (**MU**)
- Rural Residential (**RR**)
- Rural (**RU**)
- Community (**C**)
- Heavy Industrial (**HI**)
- Parks and Open Space (**OS**)



Scale - 5,000 : 1  
0 km 0.1 km 0.2 km 0.3 km 0.4 km 0.5 km







**Schedule B4 -  
Pooler's Corner**  
Land Use and Road Network

- Mixed Use (**MU**)
- Highway Commercial (**HC**)
- Community (**C**)
- Light Industrial (**LI**)
- Heavy Industrial (**HI**)
- Parks and Open Space (**OS**)