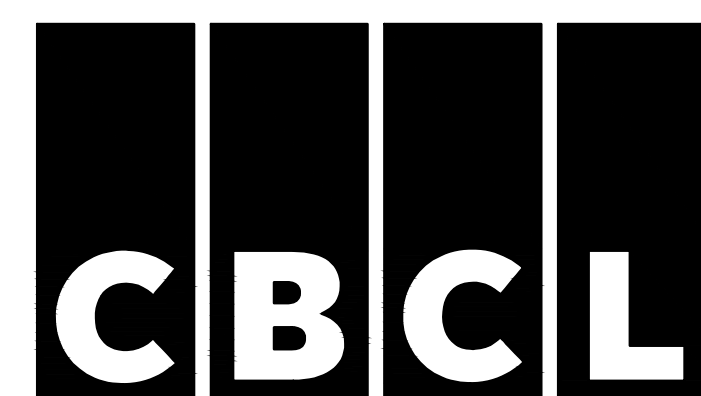
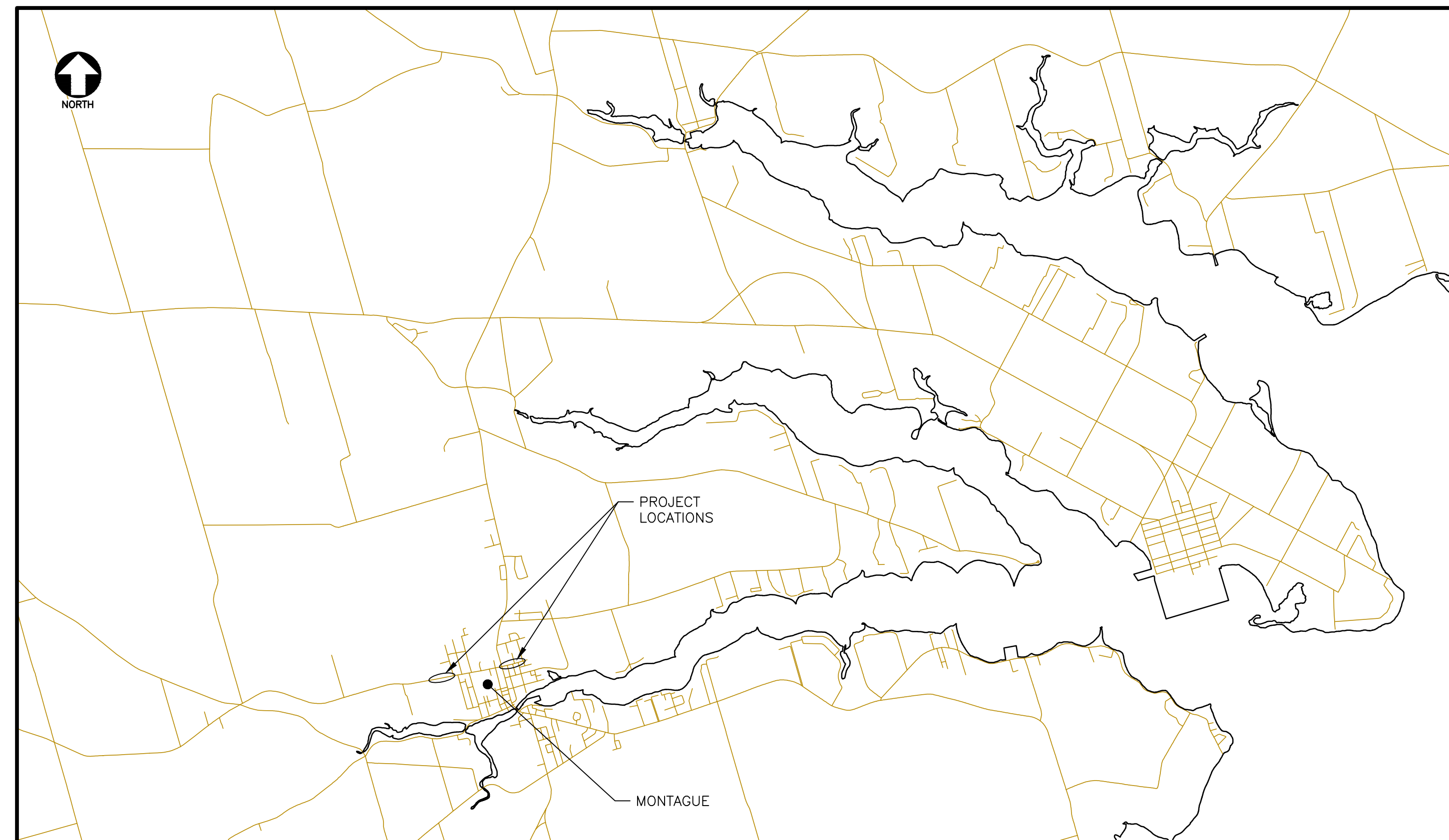


Contract No. 242652

TOWN OF THREE RIVERS

QUEENS ROAD SIDEWALK UPGRADES

Sheet List Table	
Sheet Number	Sheet Title
C01	QUEENS ROAD STA. 0+000 TO 0+140
C02	QUEENS ROAD STA. 0+140 TO 0+280
C03	QUEENS ROAD EXTENSION STA. 1+000 TO 1+287
C04	DETAILS
C05	DETAILS & SECTIONS



Project No. 242652.00



ISSUED FOR
TENDER

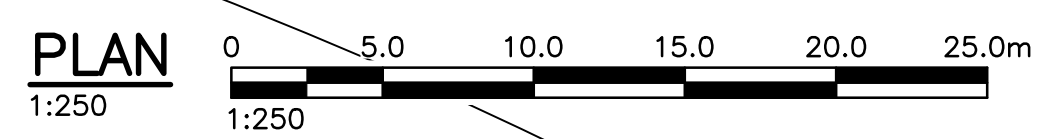
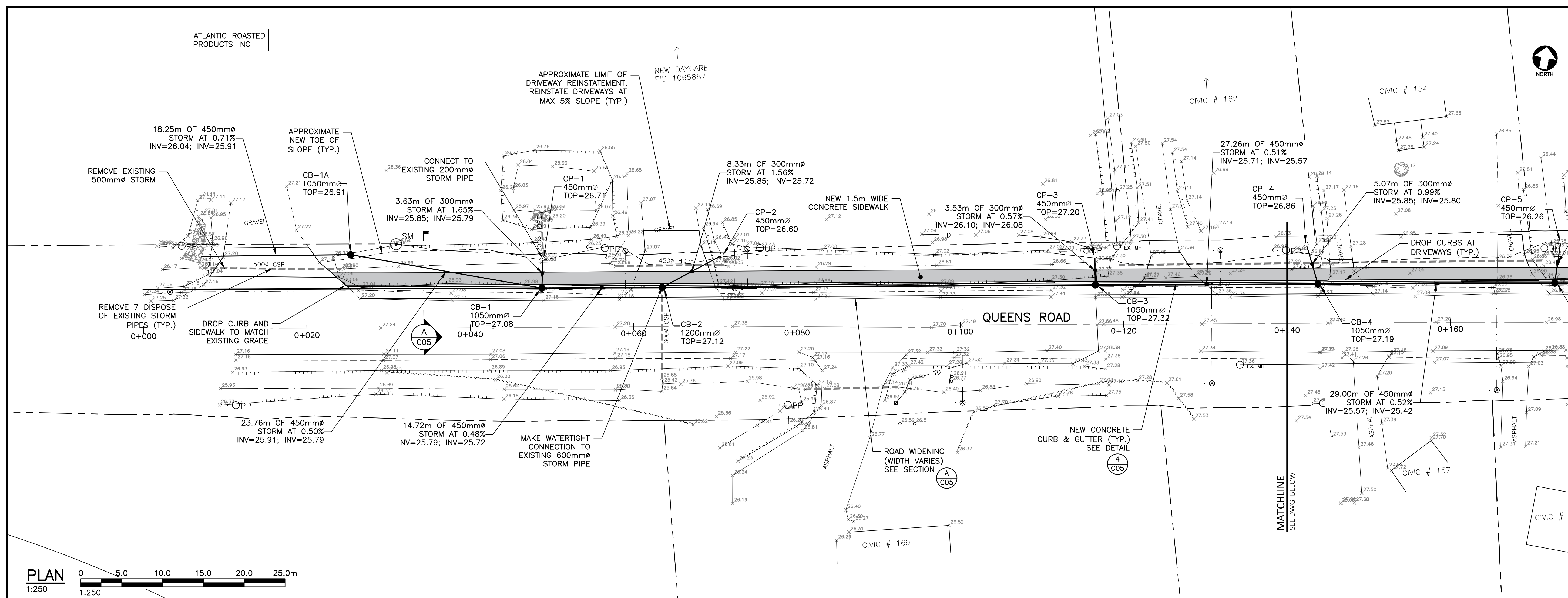
FEBRUARY 7, 2025

ATLANTIC ROASTED PRODUCTS INC



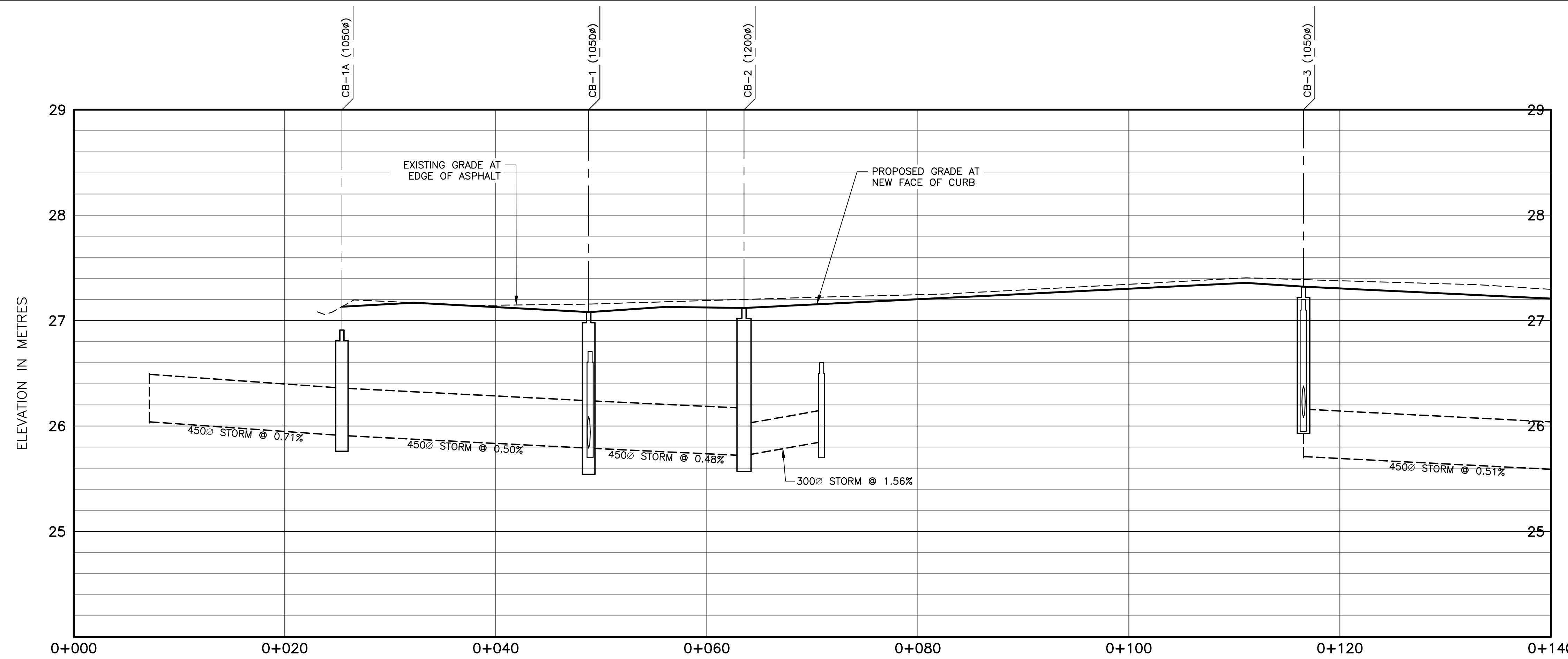
NOTES

- THIS SURVEY WAS PERFORMED BY CBCL ON OCTOBER 2, 2024.
- ELEVATIONS ARE REFERENCED TO CANADIAN GEODETIC VERTICAL DATUM OF 2013 (CGVD2013) DERIVED FROM THE P.E.I. ACTIVE CONTROL NETWORK. ALL ELEVATIONS ARE EXPRESSED IN METRES. PEICM # 5897 HAS AN OBSERVED ELEVATION OF 26.397M IN CGVD 2013.
- AZIMUTHS AND COORDINATES SHOWN ON THIS PLAN ARE BASED ON P.E.I. DOUBLE STEREOGRAPHIC PROJECTION WITH NAD83 (CSRS) REFERENCE SYSTEM, EPOCH 2010 AND DERIVED FROM THE P.E.I. ACTIVE CONTROL NETWORK. PEICM # 5897 HAS BEEN OBSERVED WITH COORDINATES EXPRESSED IN NAD 83. (CSRS) EPOCH 2010. OBSERVED COORDINATE VALUES ARE AS FOLLOWS: N=679679.136, E=425850.414
- NEW CONCRETE CURB & GUTTER TO FOLLOW ADJACENT ASPHALT ELEVATION. PROVIDE POSITIVE DRAINAGE FROM ASPHALT TO GUTTER. GUTTER TO BE SLOPED LONGITUDINALLY AT MIN. 0.5% SLOPE. DO NOT CREATE ISOLATED LOW POINTS.
- PROPERTY LINES WERE DERIVED FROM THE PROVINCIAL GIS DATABASE AND ARE APPROXIMATE ONLY.
- ALL EXISTING INFRASTRUCTURE SHOWN IS APPROXIMATE. CONTRACTOR IS RESPONSIBLE TO ARRANGE FOR ON-SITE LOCATES FOR ALL UNDERGROUND UTILITIES AND INFRASTRUCTURE PRIOR TO THE START OF WORK. EXACT LOCATIONS, DEPTHS ETC. TO BE DETERMINED IN FIELD BY CONTRACTOR. REPORT ANY DISCREPANCIES TO THE ENGINEER. SAFE WORK CLEARANCE REQUIRED IN WRITING FROM MARITIME ELECTRIC PRIOR TO WORKING NEAR POWER LINES. REPAIR ANY DAMAGE AT NO ADDITIONAL COST TO THE CONTRACT.
- CONTRACTOR IS TO COORDINATE WITH THE RESPECTIVE UTILITIES FOR THE RELOCATION OF ANY UTILITY POLES OR ANCHORS REQUIRED FOR THIS PROJECT.
- REMOVE AND REPLACE EXISTING FENCES AND SIGNS WHERE NECESSARY AND AS DIRECTED BY THE ENGINEER.
- CONTRACTOR SHALL OBTAIN ALL NECESSARY PERMITS REQUIRED TO PERFORM WORK AND TO COMPLY WITH ALL PERMIT REQUIREMENTS AND CONDITIONS. CONTRACTOR TO COMPLY WITH ALL APPLICABLE ENVIRONMENTAL REGULATIONS.
- SEE ALL DRAWINGS FOR ADDITIONAL NOTES AND DETAILS.



LEGEND

- PROPERTY LINE (EX.)
- PROPERTY PIN (EX.)
- WATERMAIN (EX.)
- GATE VALVE (EX.)
- FIRE HYDRANT (EX.)
- SANITARY SEWER (EX.)
- SANITARY MH (EX.)
- STORM SEWER (EX.)
- STORM SEWER (PR.)
- STORM CB (PR.)
- STORM CB (EX.)
- STORM HEADWALL (PR.)
- U/G POWER (EX.)
- O/H POWER (EX.)
- UTILITY POLE (EX.)
- LIGHT STANDARD (EX.)
- TRANSFORMER PAD (EX.)
- TELECOMMUNICATIONS (EX.)
- TELEPHONE BOX (EX.)
- ROAD SIGN (SM.) (EX.)
- MAIL BOX (EX.)
- DITCH (EX.)
- CHAINLINK FENCE (EX.)
- WOODEN FENCE (EX.)
- TOP OF SLOPE (EX.)
- TOP OF SLOPE (PR.)
- BOTTOM OF SLOPE (EX.)
- BOTTOM OF SLOPE (PR.)
- 20.0 MAJOR CONTOUR (EX.)
- 20.0 MAJOR CONTOUR (PR.)
- 19.0 MINOR CONTOUR (EX.)
- 19.0 MINOR CONTOUR (PR.)
- X 19.0 SPOT ELEVATION (EX.)
- X 19.00 SPOT ELEVATION (PR.)
- TREE (EX.)



PROFILE

1:250[H] 1:25[V]

CL PROFILE	STORM SEWER (PROP.)	18.247m-450 STM @ 0.71%	23.763m-450 STM @ 0.50%	14.720m-450 STM @ 0.48%	8.25m-300 STM @ 1.56%	27.263m-450 STM @ 0.51%
CL PROFILE		26.040	25.910	25.730	25.730	25.710
		27.21	27.12	27.20	27.30	27.21

No.	Description	Date	By
0	ISSUED FOR TENDER	FEB 7/25	TDG

Revision or Issue



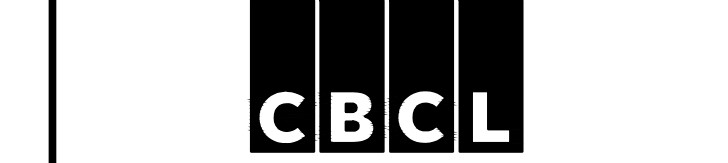
TOWN OF THREE RIVERS

QUEENS ROAD SIDEWALK UPGRADES

CIVIL

QUEENS ROAD

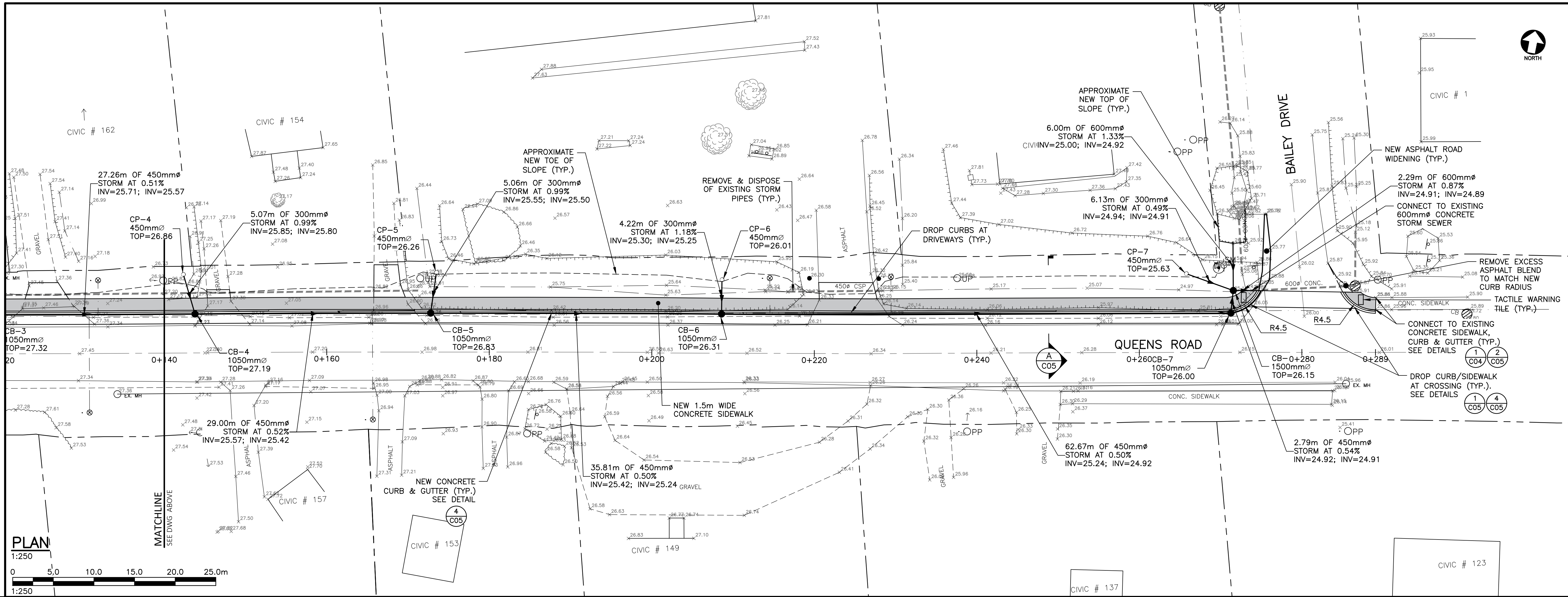
STA. 0+000 TO 0+140



CBCL No. 242652.00	Contract No. 242652	Date NOV 2024	Scale AS NOTED
--------------------	---------------------	---------------	----------------

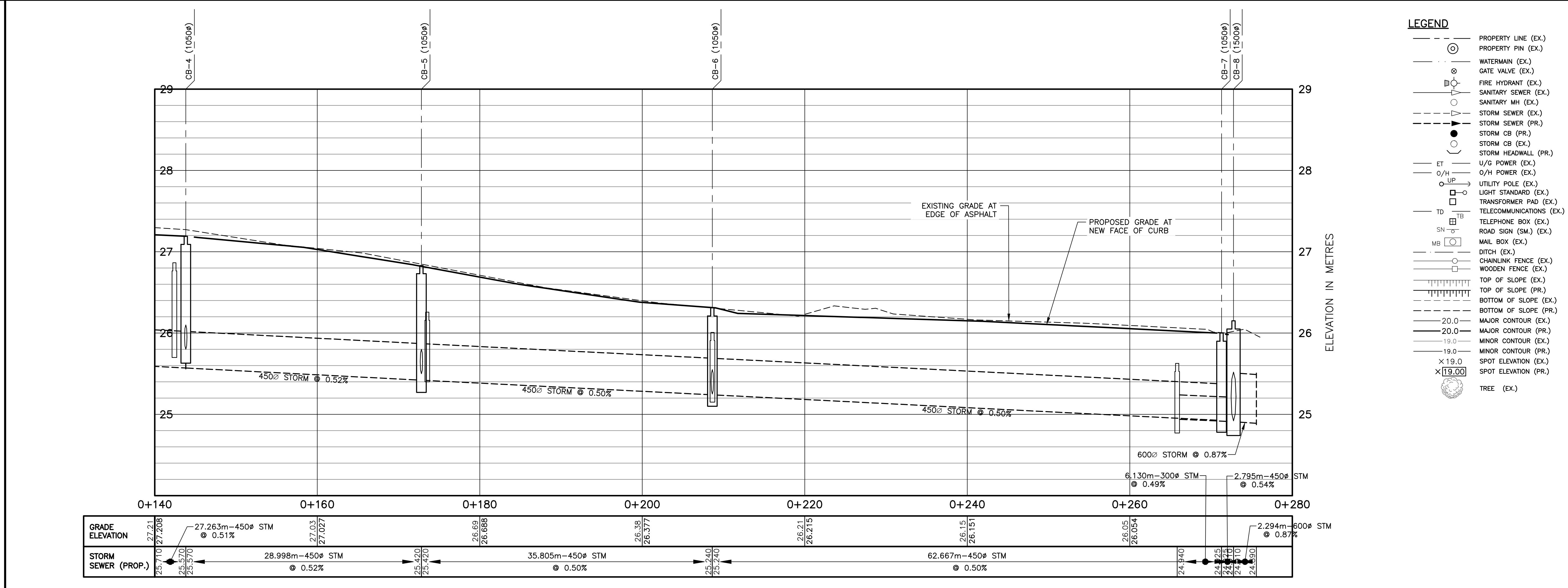
Designed TDG	Drawn DRC
Checked PSH	Approved TDG
Sheet No. 1 of 5	Drawing No.

C01



NOTES

11. THE CONTRACTOR SHALL CHECK AND VERIFY ALL PROPOSED DIMENSIONS BEFORE PROCEEDING WITH CONSTRUCTION. ANY ADJUSTMENTS WILL BE MADE BY THE ENGINEER AS NECESSARY.
12. CONTRACTOR IS RESPONSIBLE FOR SETTING GRADES AND LAYOUT CONTROL.
13. WHERE REQUIRED, EXISTING PAVEMENT MARKINGS ARE TO BE REMOVED BY GRINDING OR WATER BLASTING. BLACK PAINT WILL NOT BE PERMITTED. DO NOT OVER GRIND, ASPHALT SURFACE IS TO REMAIN WITHOUT RUTS OR GOUGES AFTER GRINDING IS COMPLETE.
14. BLEND ASPHALT, CURBS, SIDEWALKS, TRAILS, PAVEMENT MARKINGS, TOPSOIL/SEED, ETC. TO MATCH EXISTING AT CONSTRUCTION LIMITS.
15. THE CONTRACTOR SHALL REMOVE AND PROPERLY DISPOSE OF ALL MATERIALS AND ITEMS INDICATED FOR REMOVAL WITHIN THE CONSTRUCTION LIMITS.
16. CONTRACTOR SHALL RETAIN A GEOTECHNICAL ENGINEER TO PROVIDE MATERIAL AND COMPACTION TESTING SERVICES, AND GEOTECHNICAL ADVICE ON METHODOLOGY TO MEET PROJECT SPECIFICATIONS.
17. CONTRACTOR SHALL ADJUST ALL EXISTING VALVE BOXES, MANHOLES, AND CATCH BASINS TO BE FLUSH WITH FINISHED GRADE AS REQUIRED.
18. SEE ALL DRAWINGS FOR ADDITIONAL NOTES AND DETAILS.



No.	Description	Date	By
0	ISSUED FOR TENDER	FEB 7/25	TD

Revision or Issue

Three Rivers
WHERE HISTORY IS MADE

TOWN OF THREE RIVERS

QUEENS ROAD SIDEWALK UPGRADES

CIVIL

QUEENS ROAD

STA. 0+140 TO 0+280

CBCL

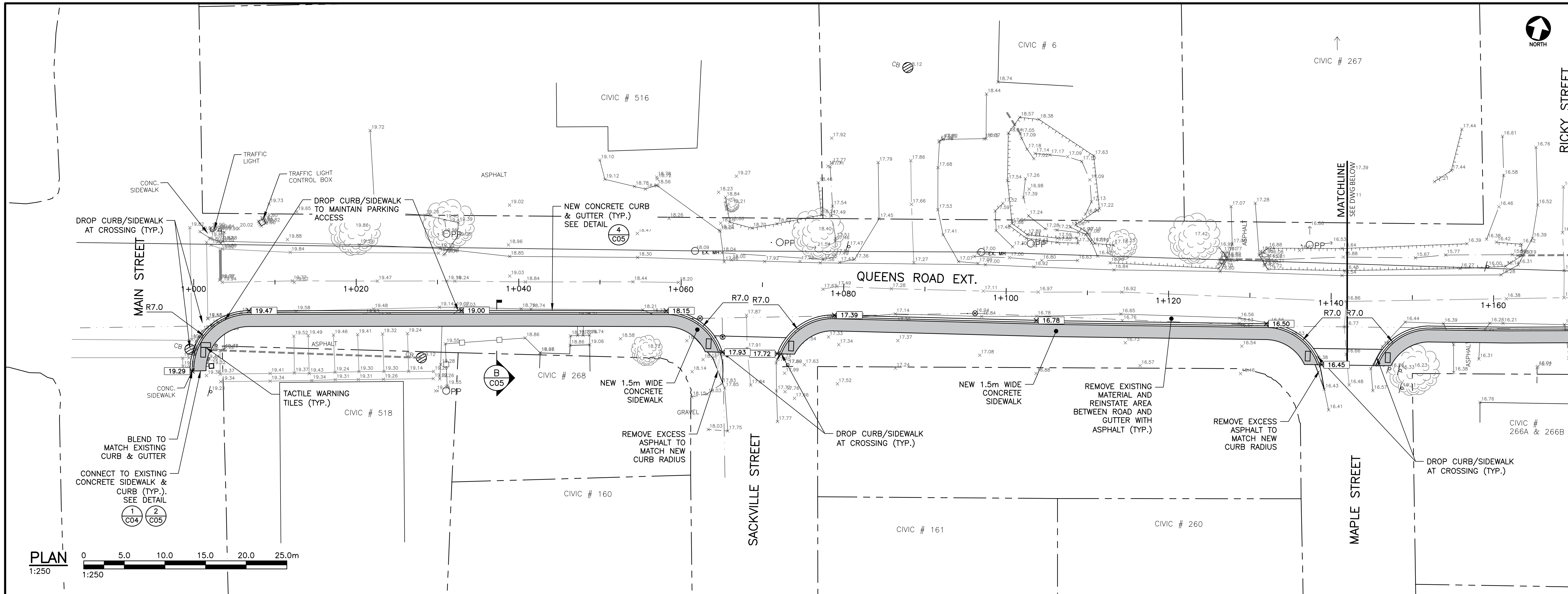
CBCL No. 242652.00	Contract No. 242652	Date NOV 2024	Scale AS NOTED
--------------------	---------------------	---------------	----------------

Designed TDG	Drawn DRC
Checked PSH	Approved TDG

Sheet No. 2 of 5

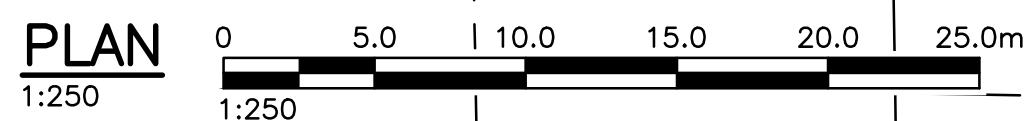
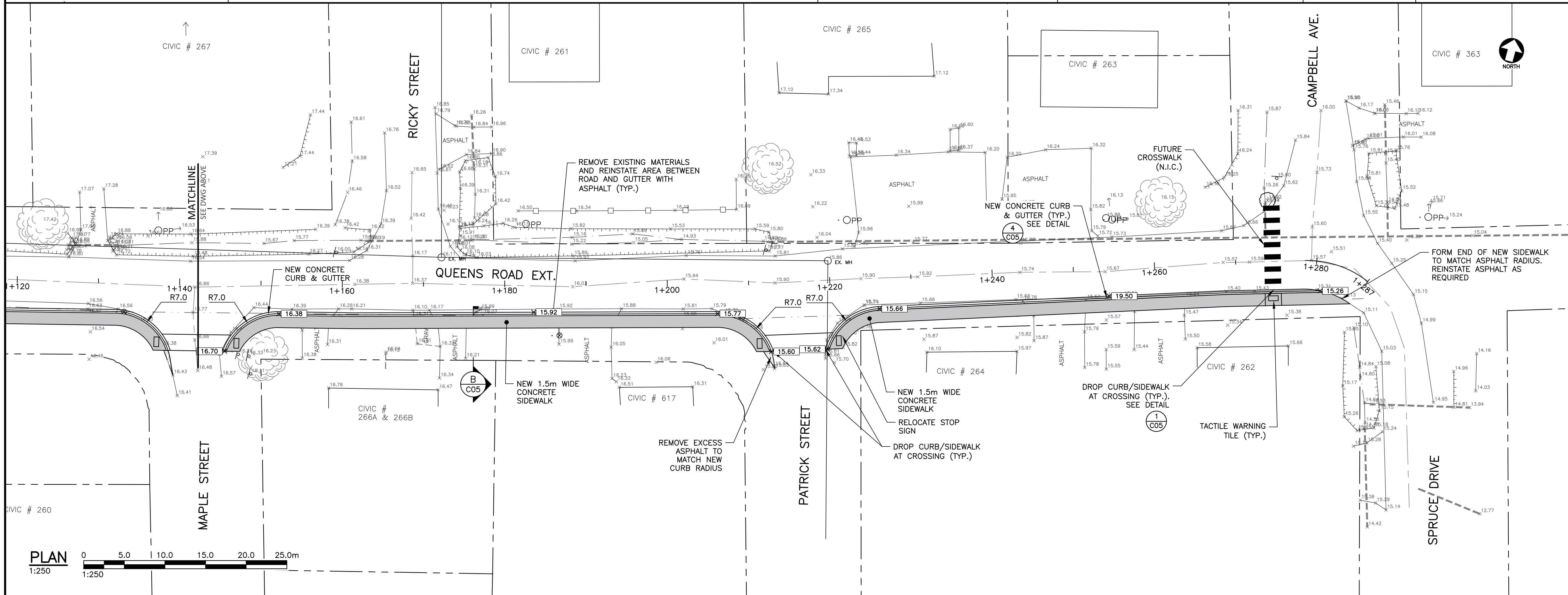
Drawing No. **C02**

PROFESSIONAL ENGINEER
Timothy D. Gallant
1736
Feb 7, 2025
DATE
PROVINCE OF PRINCE EDWARD ISLAND



LEGEND

- PROPERTY LINE (EX.)
- ⊙ PROPERTY PIN (EX.)
- WATERMAIN (EX.)
- ⊗ GATE VALVE (EX.)
- ⊕ FIRE HYDRANT (EX.)
- ⊖ SANITARY SEWER (EX.)
- ⊙ SANITARY MH (EX.)
- ⊖ STORM SEWER (PR.)
- ⊙ STORM MH (EX.)
- ⊖ STORM CB (EX.)
- ⊙ STORM HEADWALL (PR.)
- ET U/G POWER (EX.)
- O/H U/G POWER (EX.)
- ⊕ UTILITY POLE (EX.)
- ⊖ LIGHT STANDARD (EX.)
- ⊙ TRANSFORMER PAD (EX.)
- ⊖ TELECOMMUNICATIONS (EX.)
- ⊙ TELEPHONE BOX (EX.)
- ⊖ ROAD SIGN (SM.) (EX.)
- ⊙ MAIL BOX (EX.)
- ⊖ DITCH (EX.)
- ⊖ CHAINLINK FENCE (EX.)
- ⊖ WOODEN FENCE (EX.)
- ⊖ TOP OF SLOPE (EX.)
- ⊖ TOP OF SLOPE (PR.)
- ⊖ BOTTOM OF SLOPE (EX.)
- ⊖ BOTTOM OF SLOPE (PR.)
- 20.0 MAJOR CONTOUR (EX.)
- 20.0 MAJOR CONTOUR (PR.)
- 19.0 MINOR CONTOUR (EX.)
- 19.0 MINOR CONTOUR (PR.)
- × 19.0 SPOT ELEVATION (EX.)
- × 19.0 SPOT ELEVATION (PR.)
- ⊙ TREE (EX.)



ISSUED FOR TENDER	FEB 7/25	TD
No.	Description	Date
Revision or Issue		

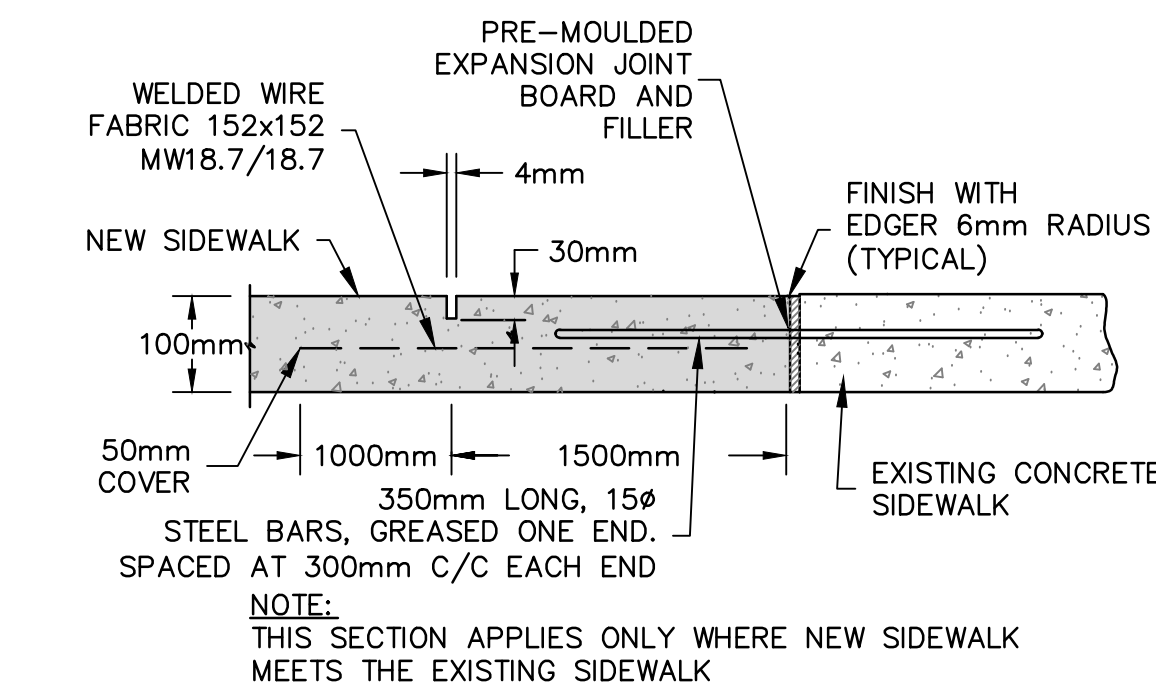


TOWN OF THREE RIVERS
QUEENS ROAD SIDEWALK UPGRADES

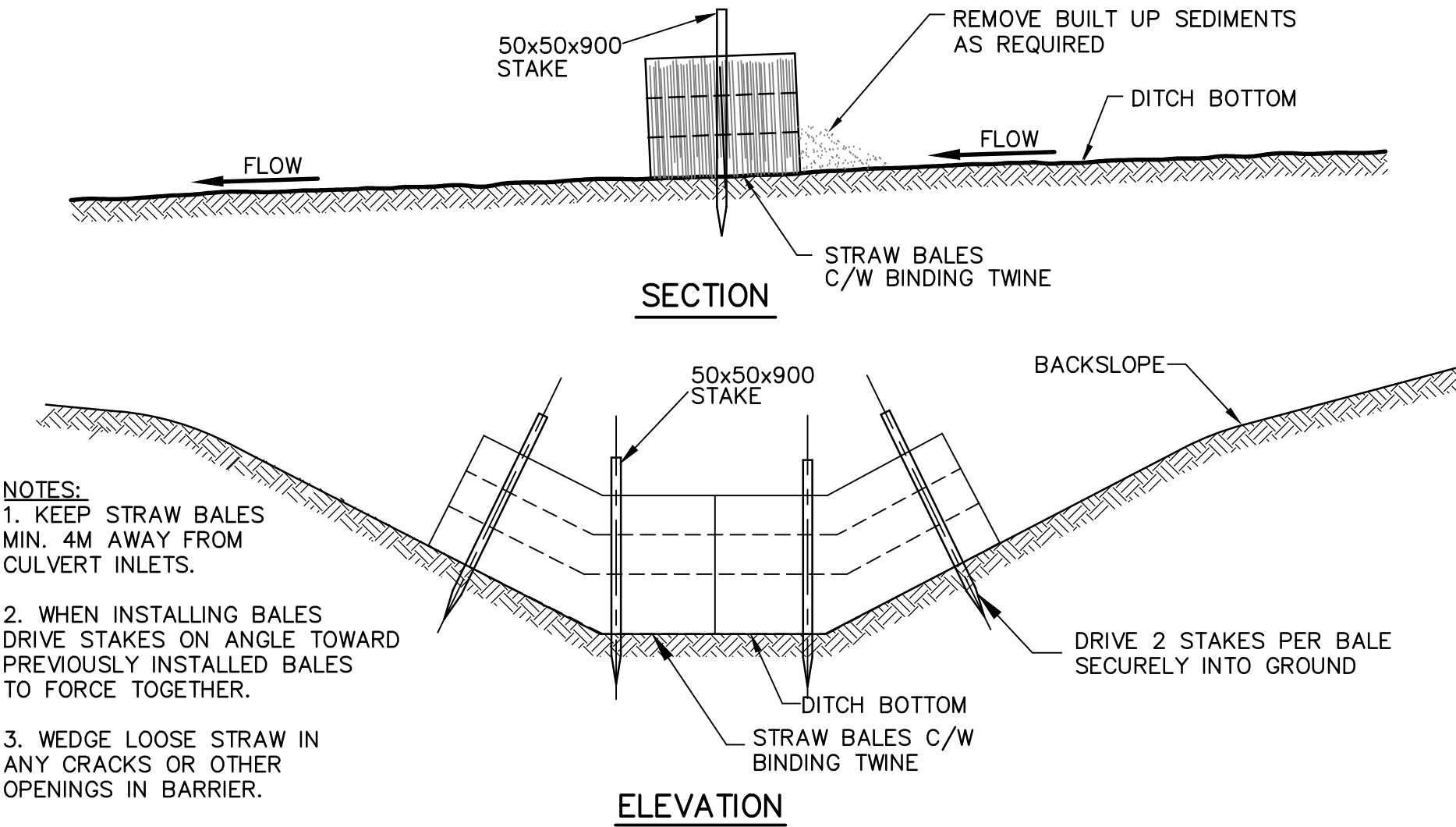
CIVIL
QUEENS ROAD EXTENSION
STA. 1+000 TO 1+287



CBCL No. 242652.00	Contract No. 242652	Date NOV 2024	Scale AS NOTED
Designed TDG	Checked PSH	Drawn DRC	Approved TDG
Sheet No. 3 of 5		Drawing No. C03	

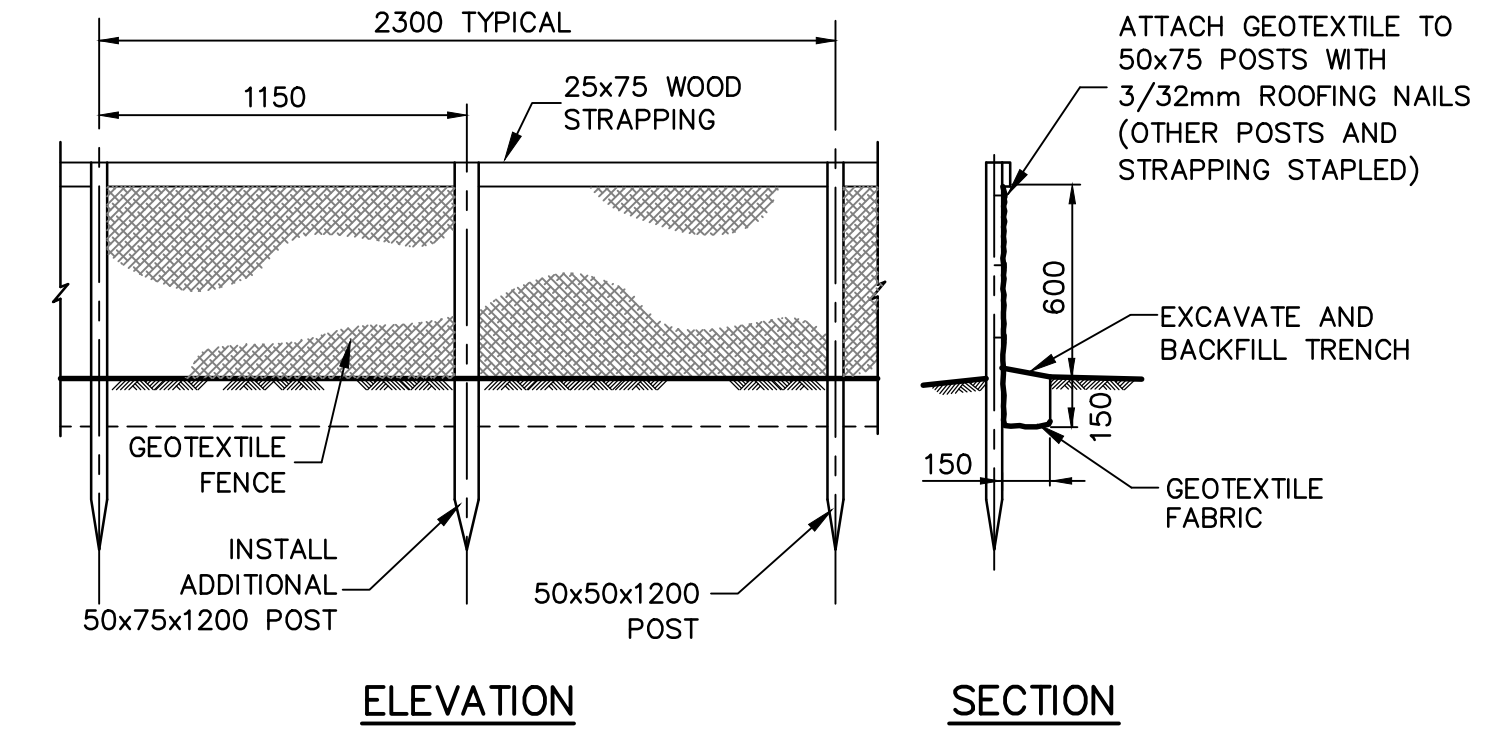


1 DETAIL—SIDEWALK CONSTRUCTION JOINT
N.T.S.

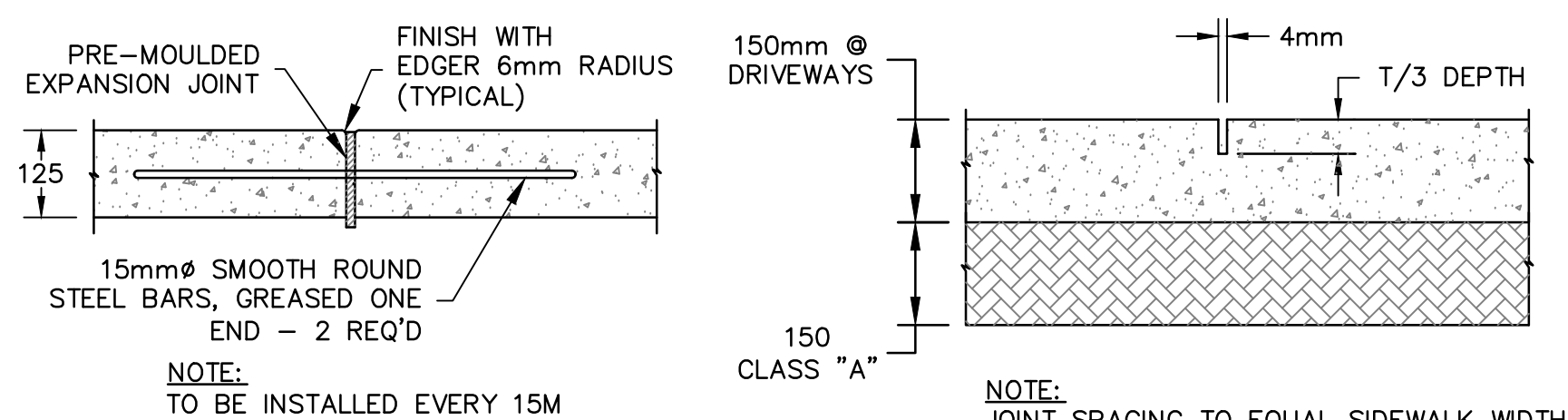


NOTES:
1. KEEP STRAW BALES MIN. 4M AWAY FROM CULVERT INLETS.
2. WHEN INSTALLING BALES DRIVE STAKES ON ANGLE TOWARD PREVIOUSLY INSTALLED BALES TO FORCE TOGETHER.
3. WEDGE LOOSE STRAW IN ANY CRACKS OR OTHER OPENINGS IN BARRIER.

5 DETAIL—STRAW BALE SEDIMENT CONTROL BARRIER
N.T.S.



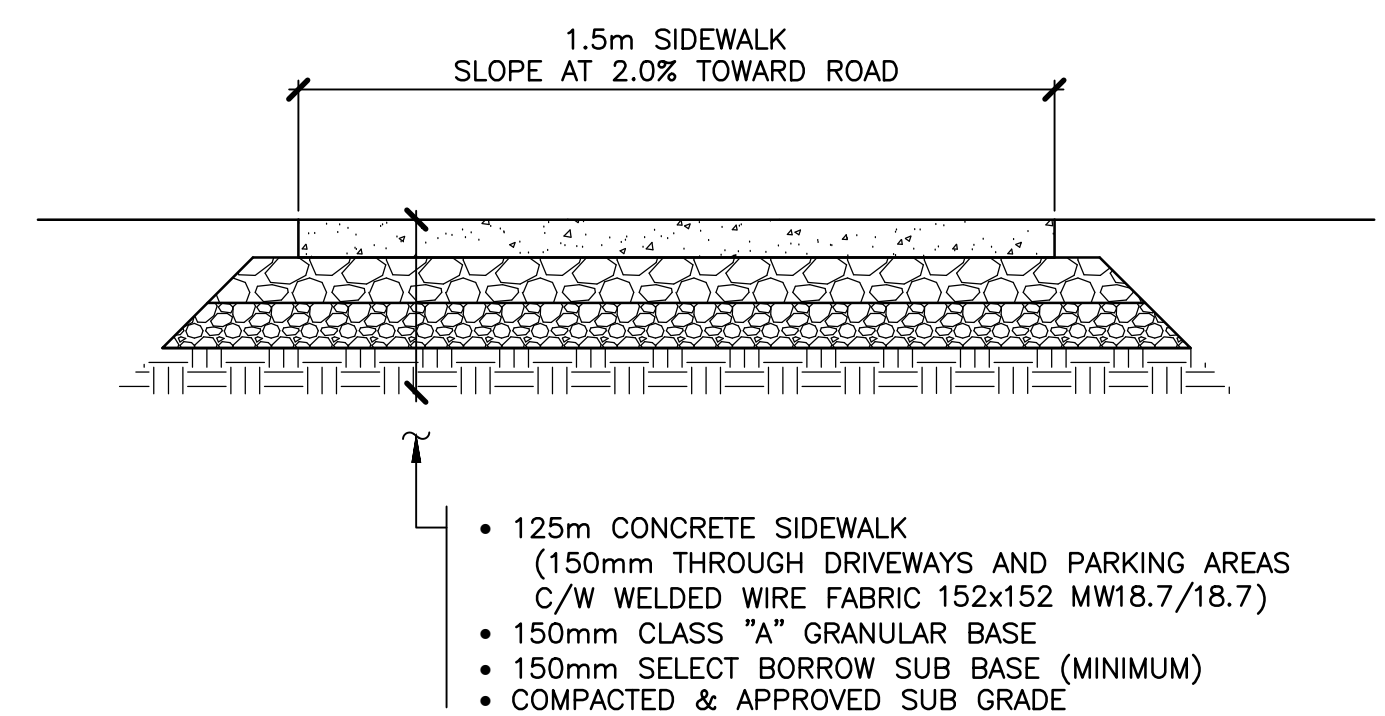
9 DETAIL—SEDIMENT CONTROL FENCE
N.T.S.



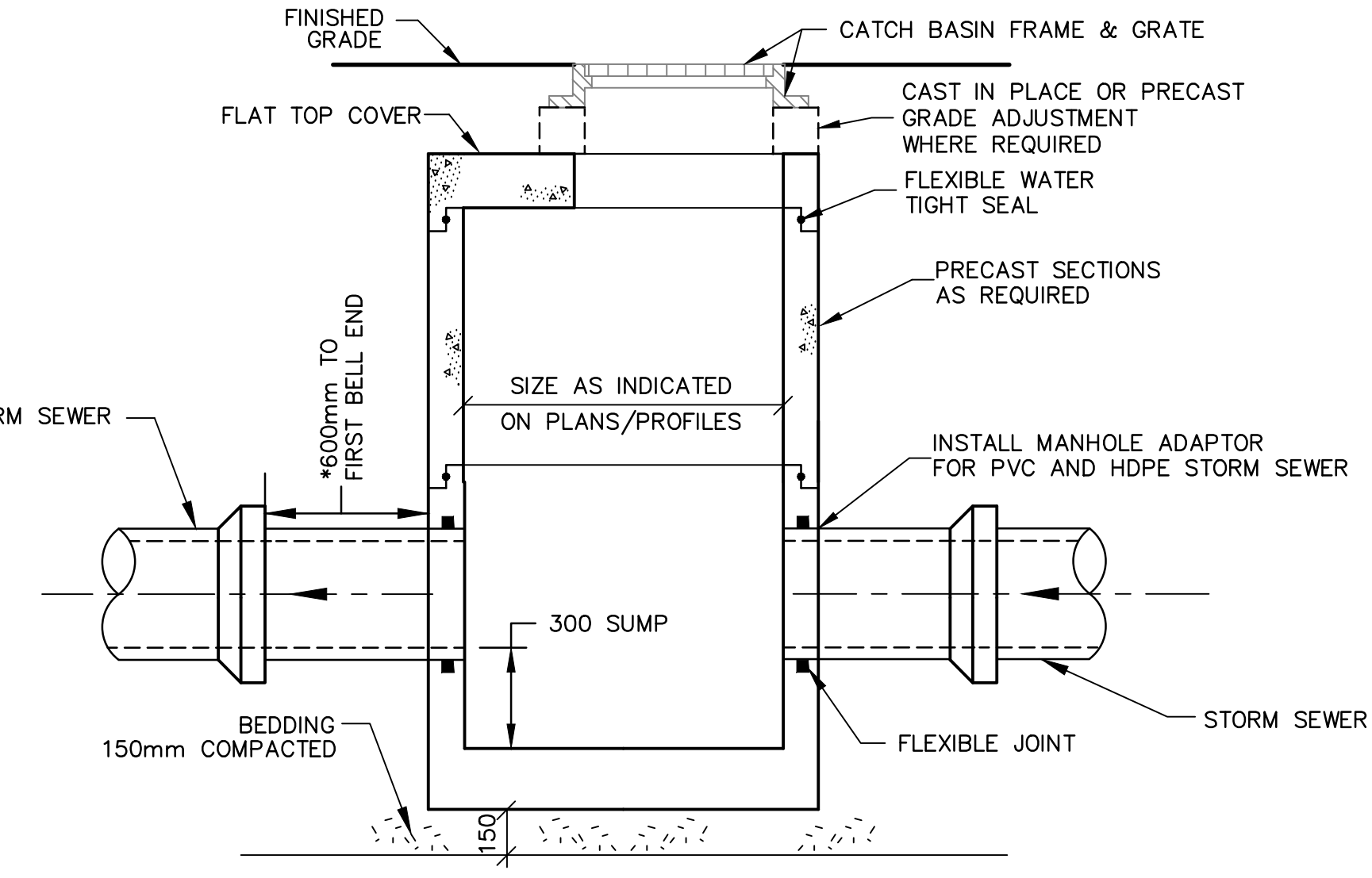
ISOLATION JOINT
N.T.S.

CONTROL JOINT
N.T.S.

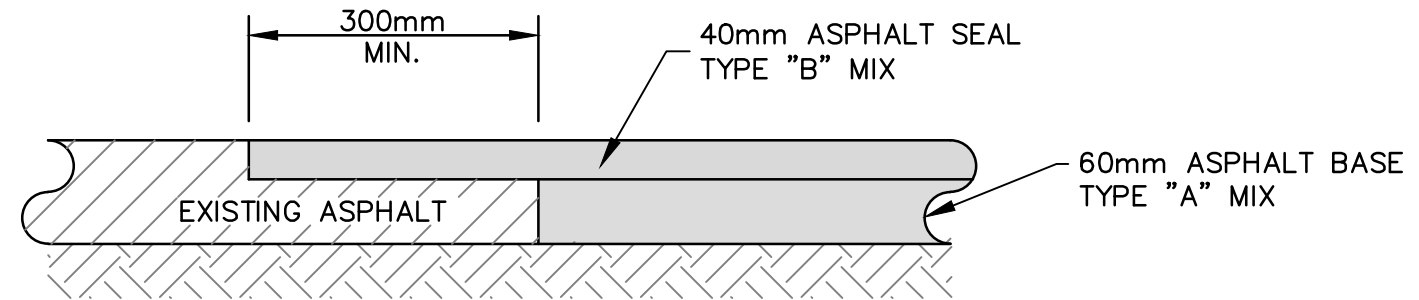
2 DETAIL—SIDEWALK ISOLATION & CONTROL JOINTS
N.T.S.



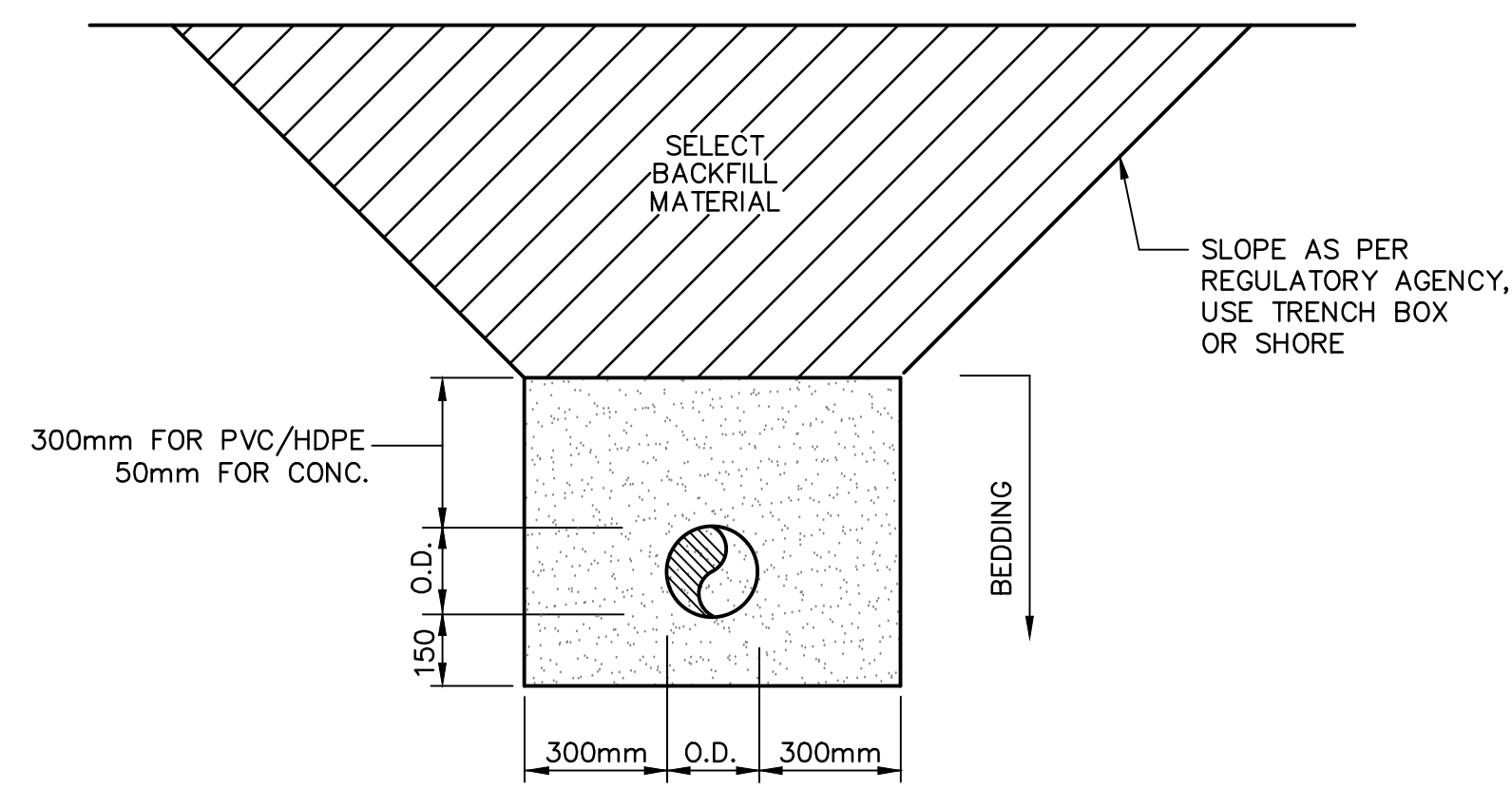
6 DETAIL—CONCRETE SIDEWALK
N.T.S.



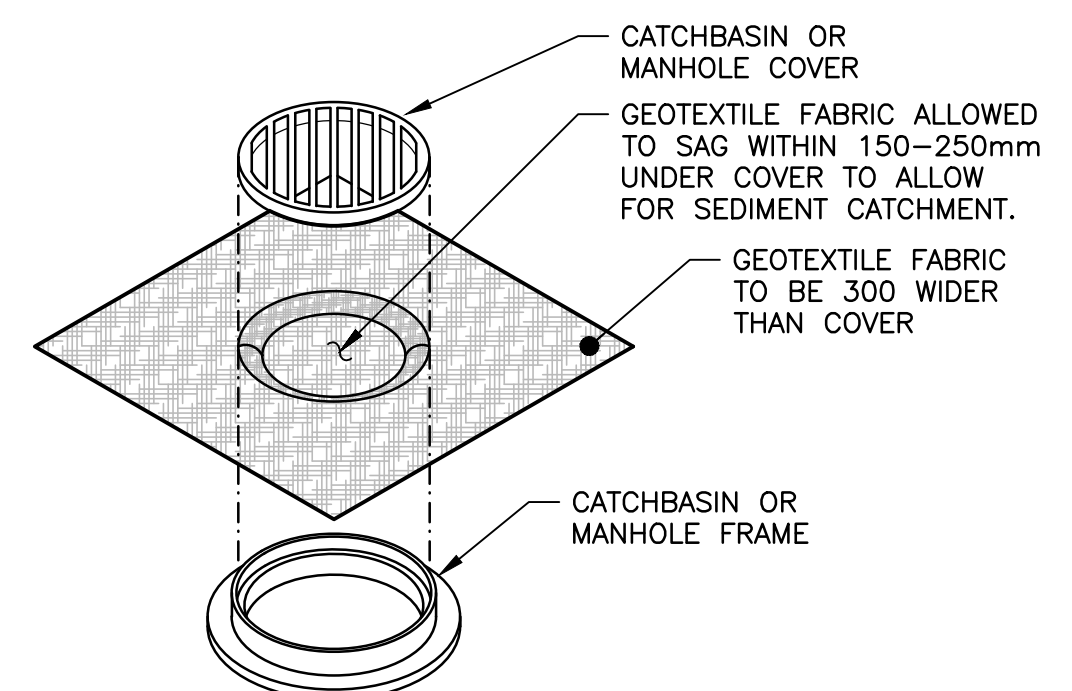
10 DETAIL—CATCH BASIN
N.T.S.



3 DETAIL—ASPHALT TRANSITION TO EXISTING
N.T.S.

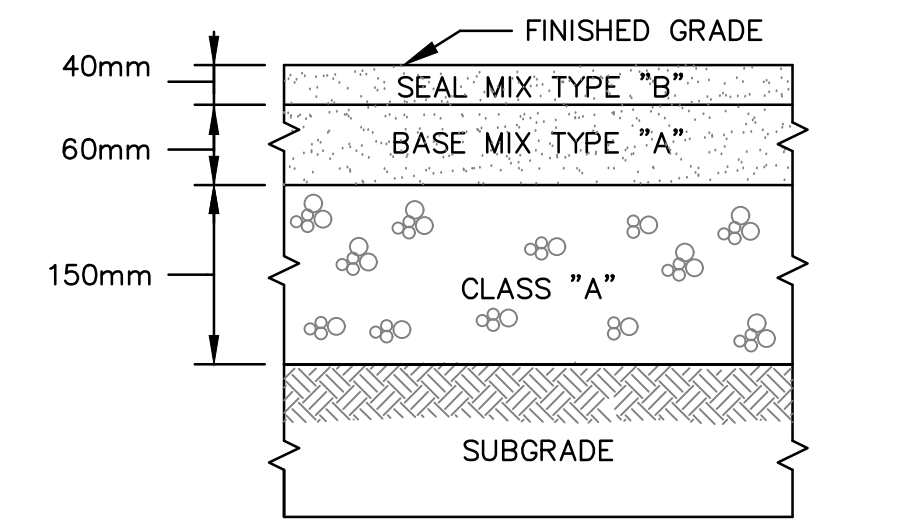


4 DETAIL—SINGLE PIPE TRENCH (TYPICAL)
N.T.S.

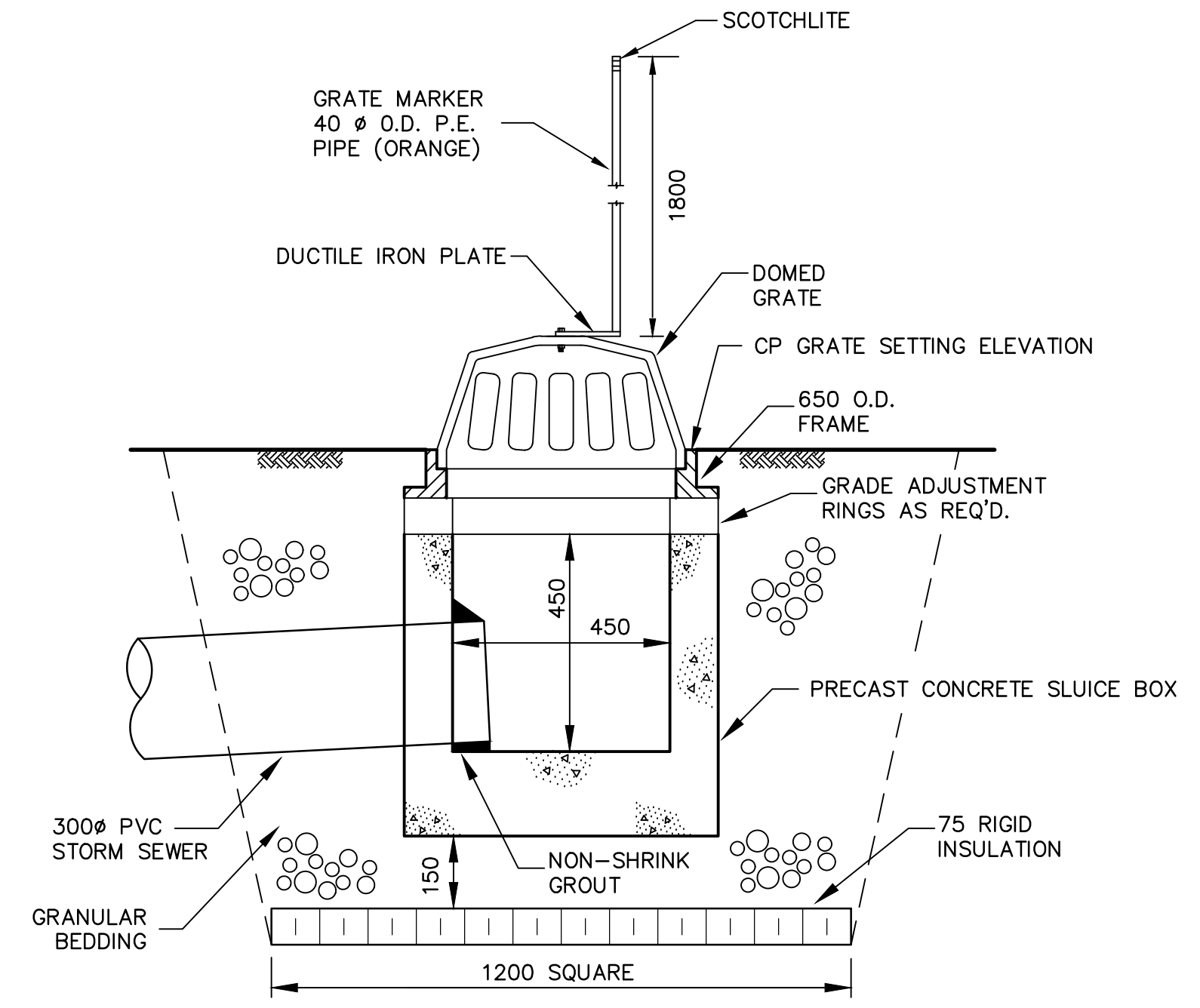


NOTES:
1. INSPECT GEOTEXTILE FABRIC FOR DAMAGE/SEDIMENT BUILDUP WEEKLY AND BEFORE/AFTER EVERY RAIN EVENT.
2. CLEAN/REPLACE GEOTEXTILE FABRIC IMMEDIATELY IF DAMAGED OR IF SEDIMENT BUILDUP IS OBSERVED/IMPEDING FLOWS.
3. DO NOT CUT HOLES IN GEOTEXTILE FABRIC.

8 DETAIL—SEDIMENT CONTROL INTO STORM STRUCTURES
N.T.S.



7 DETAIL—ASPHALT REINSTATEMENT
N.T.S.



11 DETAIL—CATCH PIT
N.T.S.

NOTES
1. COMPACT UNDER EXISTING AND/OR PROPOSED ASPHALT OR CONCRETE SURFACES TO 100% STANDARD PROCTOR. ELSEWHERE 95% STANDARD PROCTOR.
2. REINSTATE ALL DISTURBED GRASS AREAS WITH 100mm TOPSOIL AND SOD.
3. SEE ALL DRAWINGS FOR ADDITIONAL NOTES AND DETAILS.

0	ISSUED FOR TENDER	FEB 7/25	TDG
No.	Description	Date	By

Revision or Issue



TOWN OF THREE RIVERS
QUEENS ROAD SIDEWALK UPGRADES

CIVIL

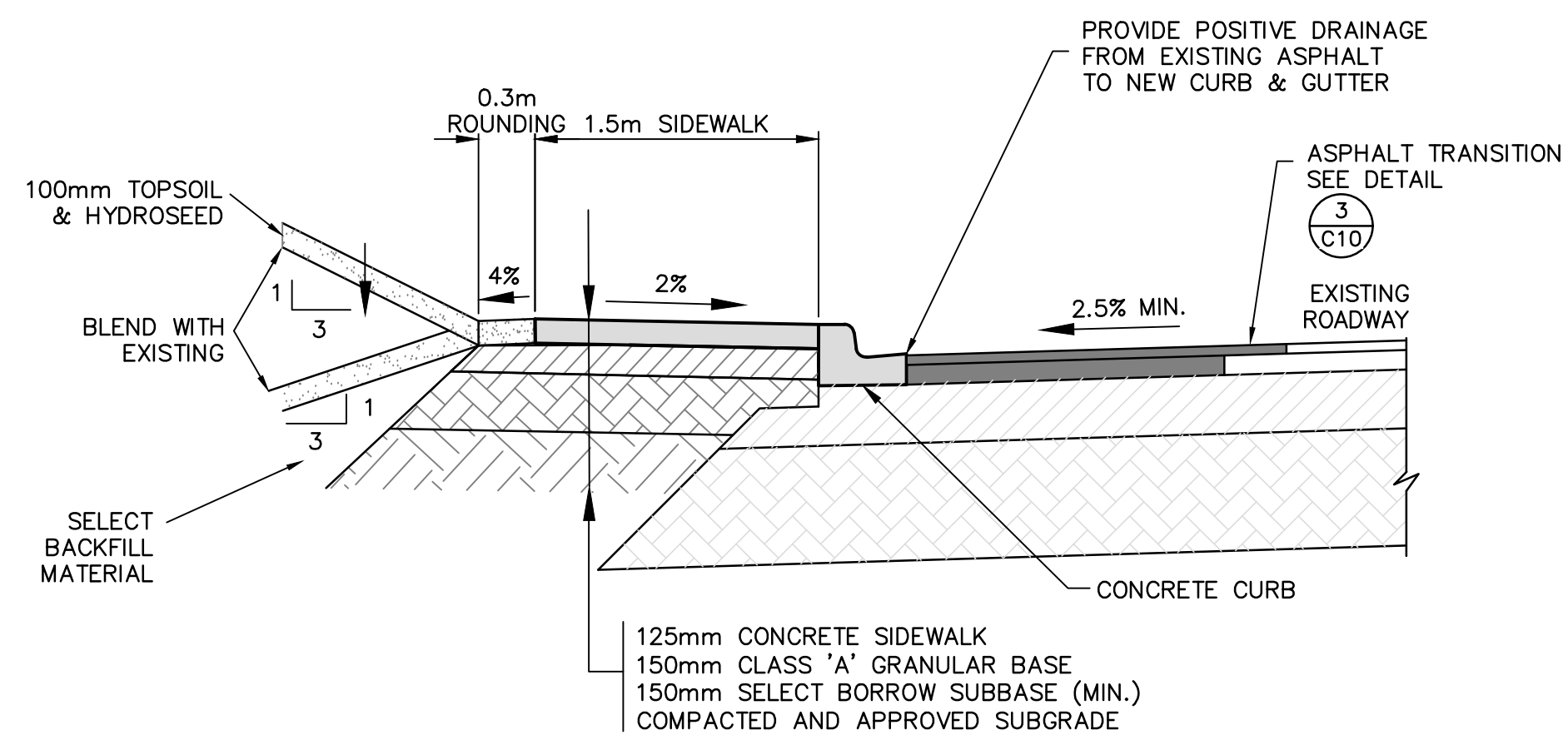
DETAILS



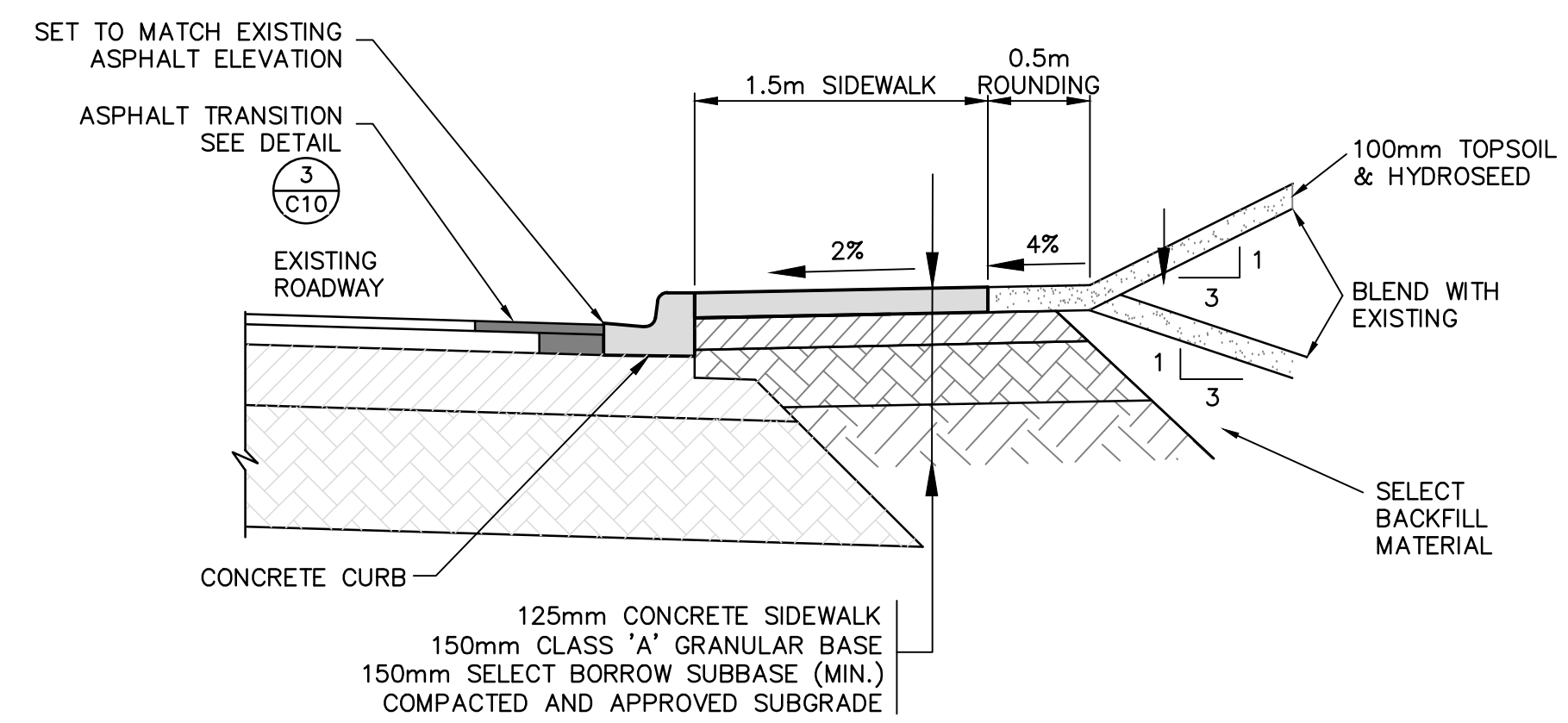
CBCL No. 242652.00	Contract No. 242652	Date NOV 2024	Scale AS NOTED
Designed TDG	Drawn DRC	Checked PSH	Approved TDG
Sheet No. 4	of 5		

PROFESSIONAL ENGINEER
Timothy D. Gallant
1735
Feb 7, 2025
DATE
PROVINCE OF PRINCE EDWARD ISLAND

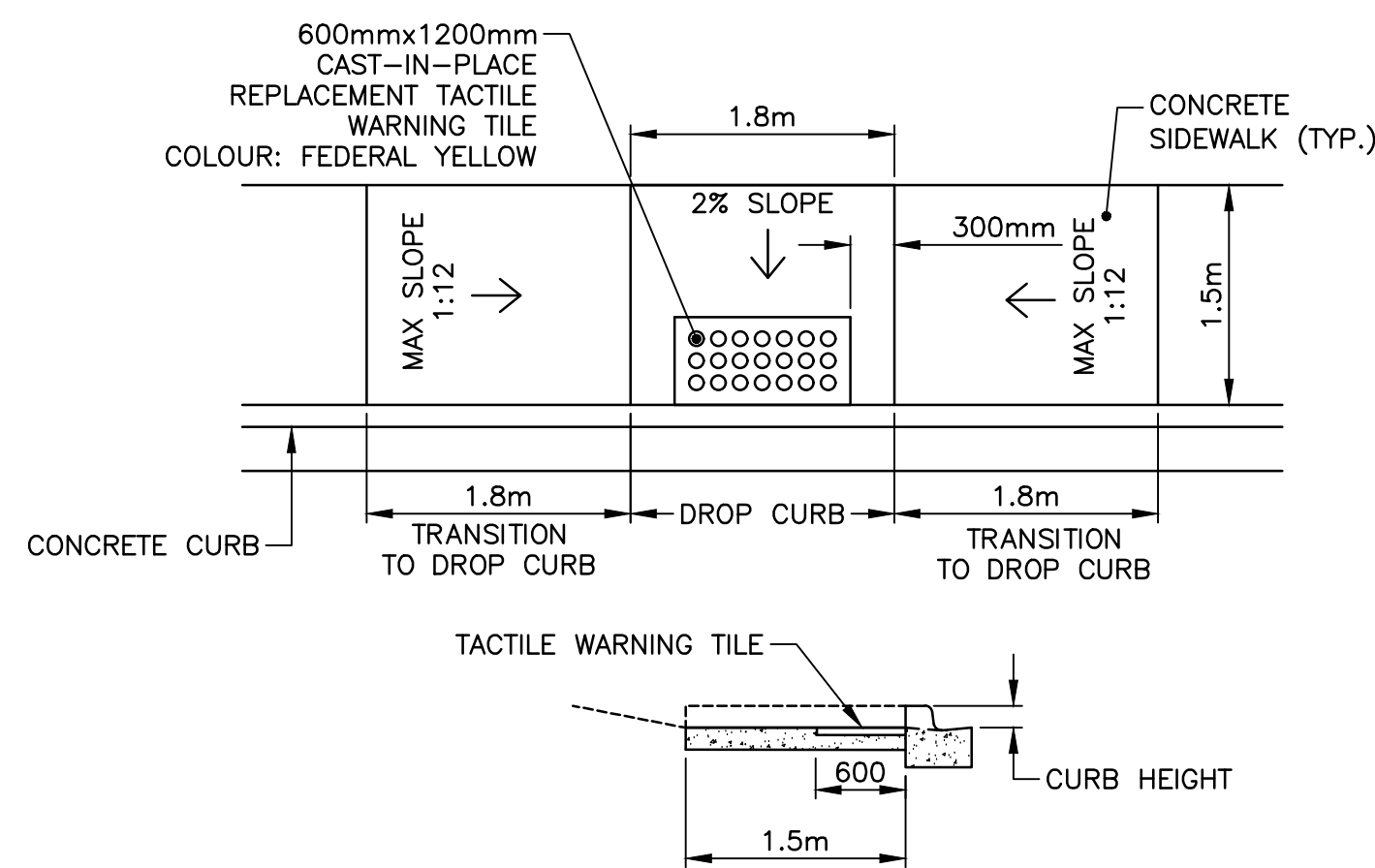
C04



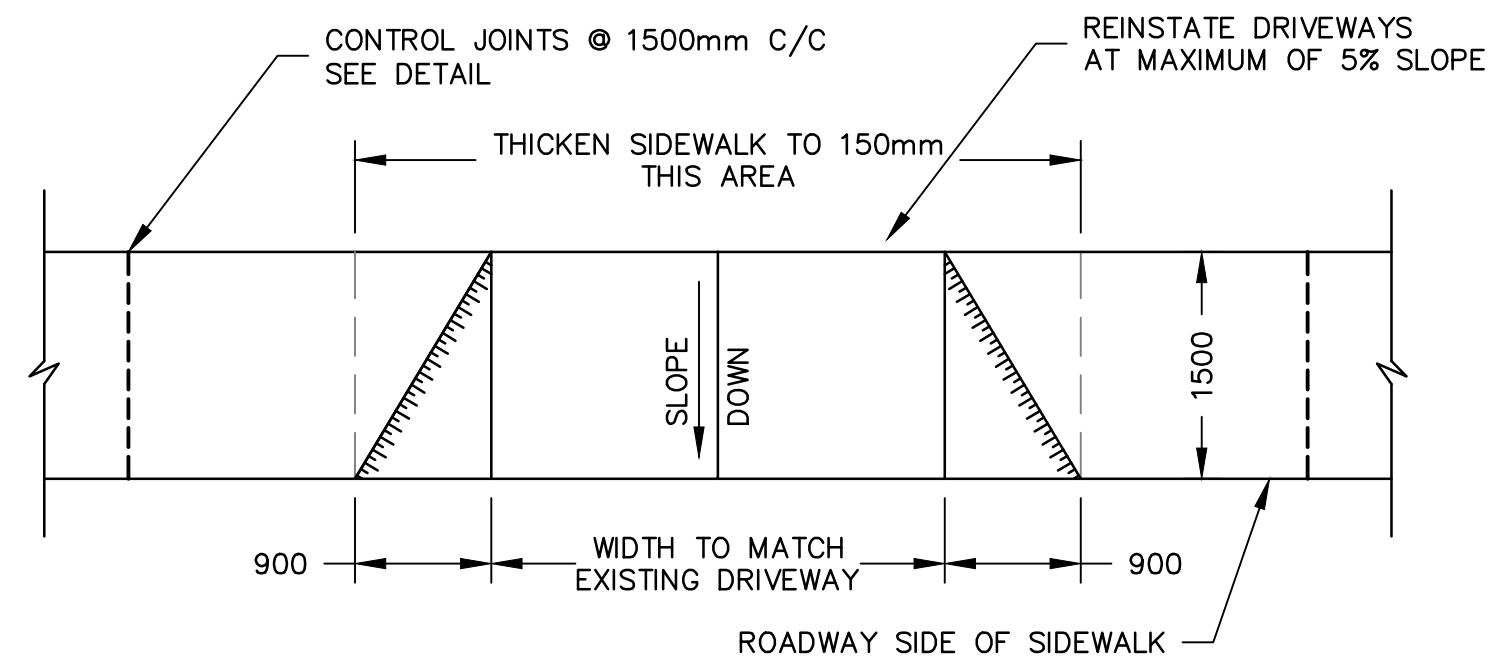
A SECTION—CONCRETE SIDEWALK
N.T.S. (QUEENS ROAD)



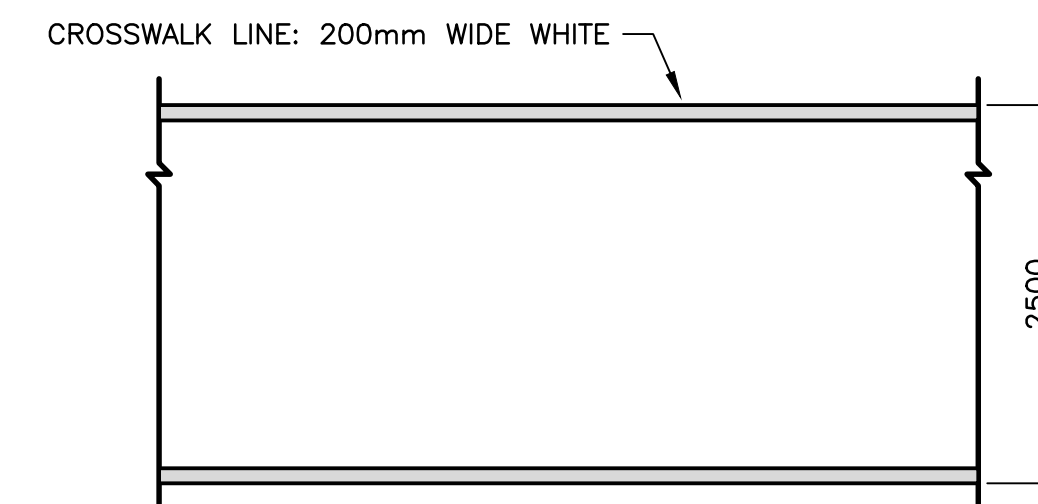
B SECTION—CONCRETE SIDEWALK
N.T.S. (QUEENS ROAD EXTENSION)



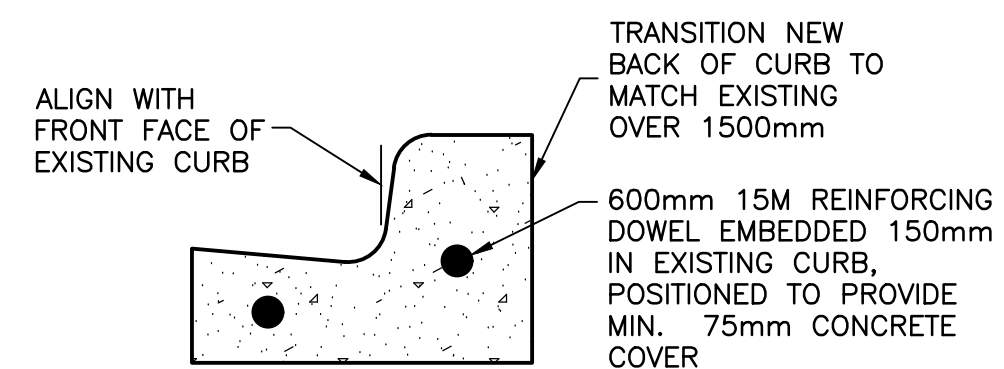
1 DETAIL— CONCRETE RAMP WITH TACTILE WARNING TILE
N.T.S. SIDEWALK PARALLEL WITH CURB (MID BLOCK ONLY)



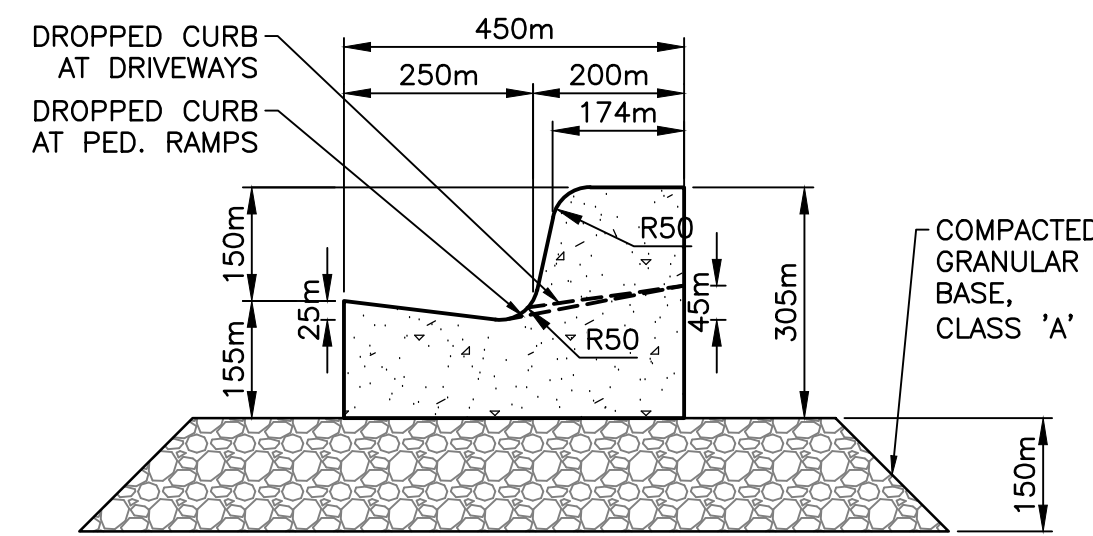
3 DETAIL— DRIVEWAY OPENING
N.T.S.



5 DETAIL— PAINTED CROSSWALK
1:50 (PARALLEL LINES)



2 DETAIL— CONNECT TO EXISTING CURB
N.T.S.



4 DETAIL— CONCRETE CURB & GUTTER
N.T.S.

No.	Description	Date	By
0	ISSUED FOR TENDER	FEB 7/25	TDG

Revision or Issue



TOWN OF THREE RIVERS
QUEENS ROAD SIDEWALK UPGRADES

CIVIL

DETAILS & SECTIONS



CBCL No.	Contract No.	Date	Scale
242652.00	242652	NOV 2024	AS NOTED

Designed TDG	Drawn DRC
Checked PSH	Approved TDG
Sheet No. 5 of 5	Drawing No. C05

PROFESSIONAL ENGINEER
Timothy D. Gallant
1735
Feb 7, 2025
DATE
PROVINCE OF PRINCE EDWARD ISLAND